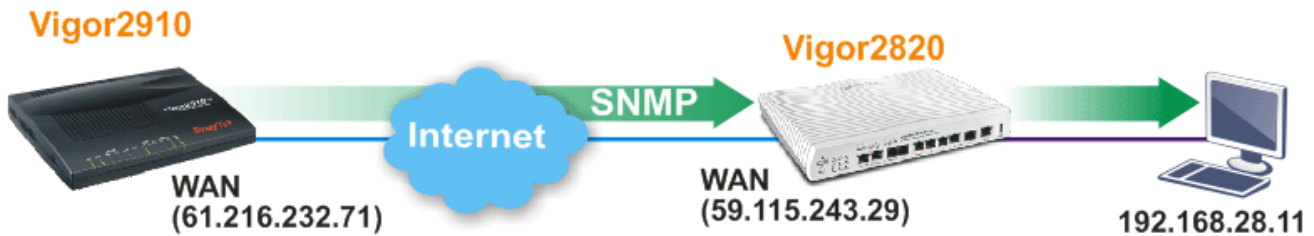


How to Use PRTG to Monitor Vigor Router Network Traffic

Network Environment



Please follow the steps listed below:

1. Open Vigor 2910 WEB UI and select **System Maintenance>>Management**.
2. In the field of **SNMP Setup**, please configure the following settings as below.

System Maintenance >> Management

Management Setup

Management Access Control <input type="checkbox"/> Allow management from the Internet <input type="checkbox"/> FTP Server <input checked="" type="checkbox"/> HTTP Server <input checked="" type="checkbox"/> HTTPS Server <input checked="" type="checkbox"/> Telnet Server <input type="checkbox"/> SSH Server <input checked="" type="checkbox"/> Disable PING from the Internet	Management Port Setup <input checked="" type="radio"/> User Define Ports <input type="radio"/> Default Ports Telnet Port: 23 (Default: 23) HTTP Port: 80 (Default: 80) HTTPS Port: 443 (Default: 443) FTP Port: 21 (Default: 21) SSH Port: 22 (Default: 22)
Access List List IP: Subnet Mask 1: 2: 3:	SNMP Setup <input checked="" type="checkbox"/> Enable SNMP Agent Get Community: public Set Community: private Manager Host IP: 59.115.243.29 Trap Community: public Notification Host IP: Trap Timeout: 10 seconds

OK

- Check the box of **Enable SNMP Agent**,
- Use the default setting, Public for **Get Community**,
- Use the default setting, Private for **Set Community**,
- Input WAN IP of Vigor2820(e.g, Vigor2820's WAN IP is 59.115.243.29) for **Manager Host IP**
- Click **OK**.

- Open Vigor 2820 WEB UI and select **NAT>> Open Ports**. Click Index number 1 to create a profile.

NAT >> Open Ports Setup >> Edit Open Ports Setup

Index No. 1

Enable Open Ports

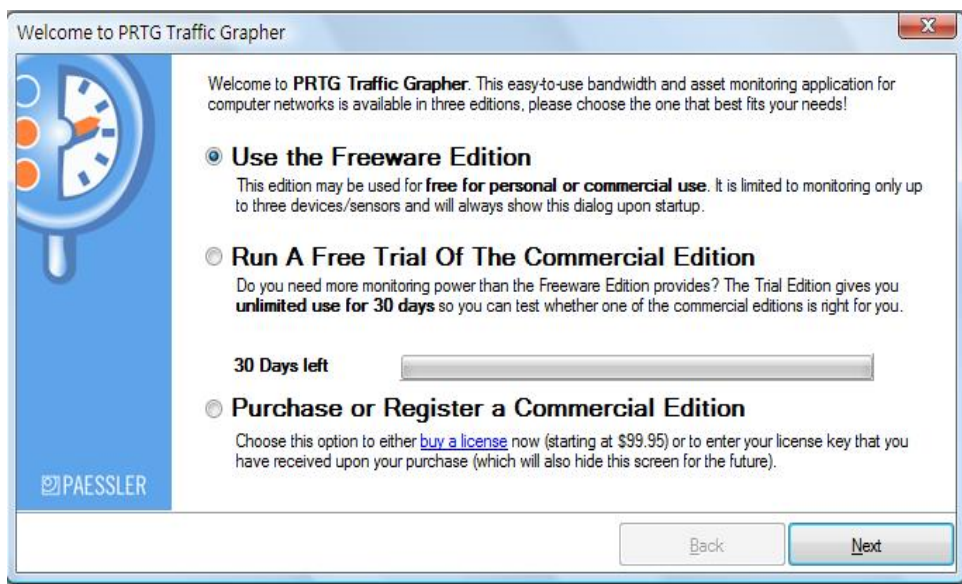
Comment:

Local Computer:

	Protocol	Start Port	End Port		Protocol	Start Port	End Port
1.	TCP	161	161	6.	----	0	0
2.	----	0	0	7.	----	0	0
3.	----	0	0	8.	----	0	0
4.	----	0	0	9.	----	0	0
5.	----	0	0	10.	----	0	0

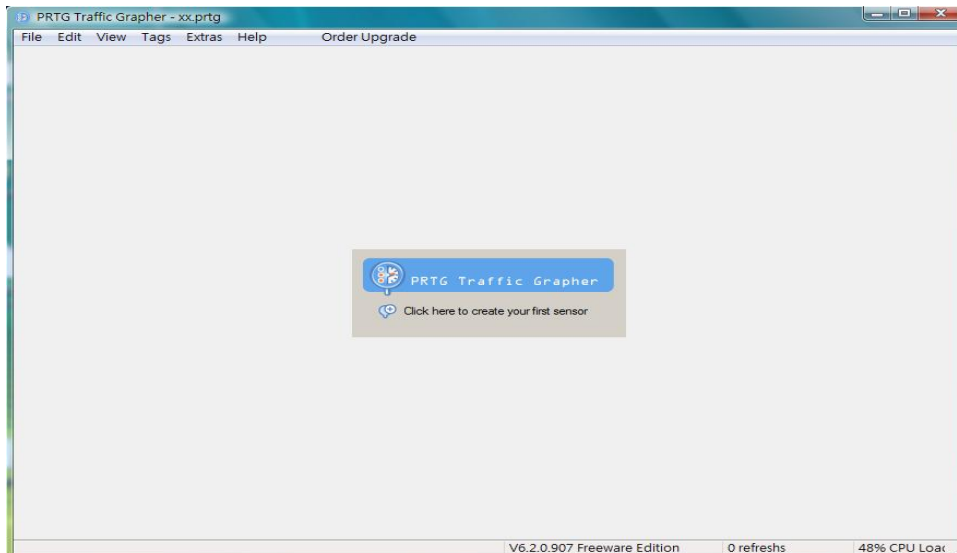
- Check the box of **Enable Open Ports**.
- Type the profile name in the field of **Comment** (e.g., SNMP)
- Type the IP address in the field of **Local Computer** as PRTG server (e.g., 192.168.28.11)
- Choose TCP as the protocol and set 161 as Start Port and End Port
- Click **OK**.

- Download and install PRTG software. After installing, run PRTG.
(PRTG download link: <http://www.paessler.com>)



- Select **Use The Freeware Edition**.
- Click **Next**.

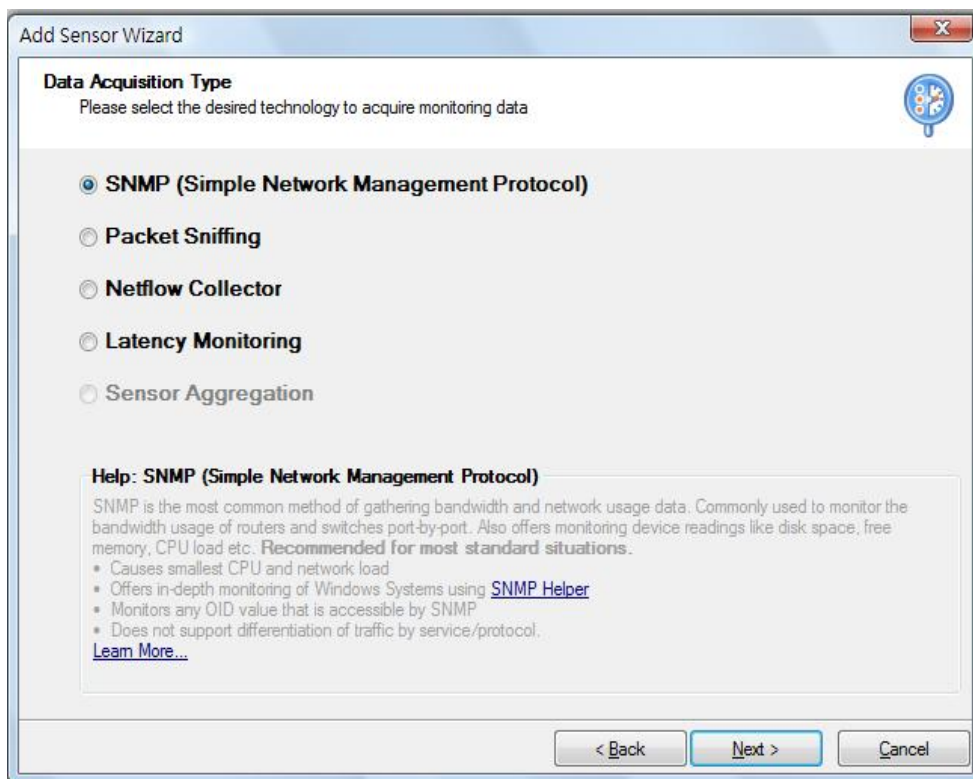
5. Click **PRTG Traffic Grapher**.



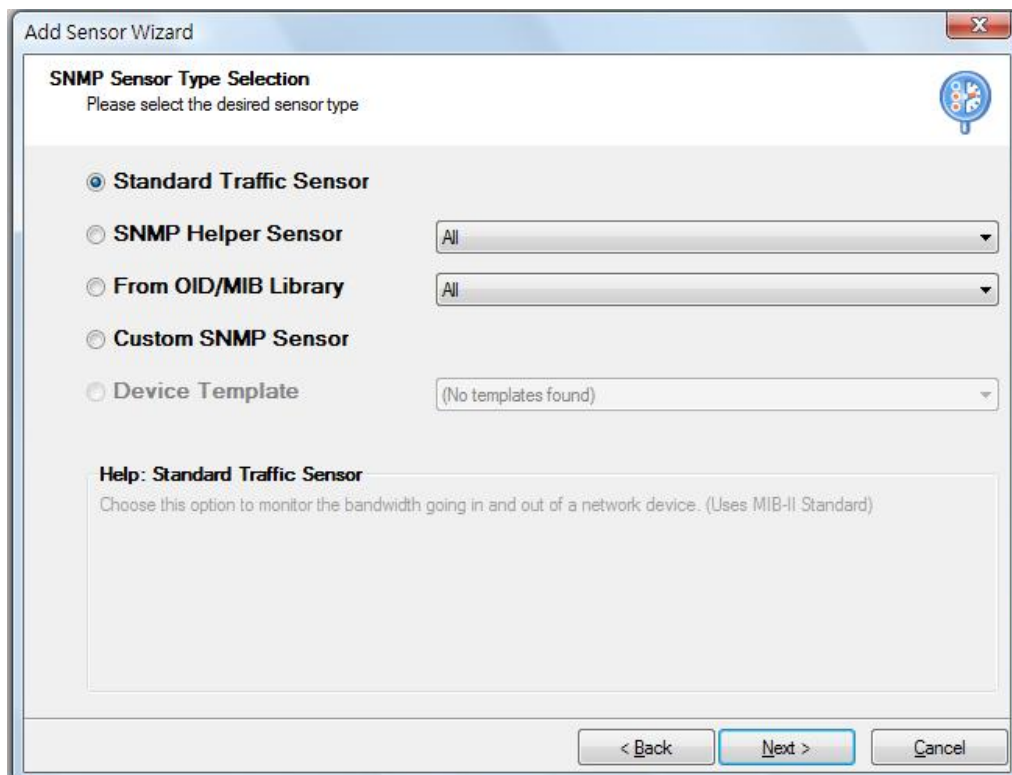
6. Click **Next**.



7. In **Data Acquisition Type**, select **SNMP** and click **Next**.



8. In **SNMP Sensor Type Selection**, select **Standard Traffic Sensor** and click **Next**.



9. In **Device Selection**, please configure the relational settings as follows:

Add Sensor Wizard

Device Selection
Please enter the device connection data

Device Name/Alias: public

IP Address/DNS Name: 61.216.232.71

SNMP Version:

- V1:** Most commonly used. Try this one if you are not sure!
- V2c:** Supports 64 bit counters (use this e.g. for Gigabit links)
- V3:** Supports authentication and/or encryption

SNMP Port: 161 (Standard is '161')

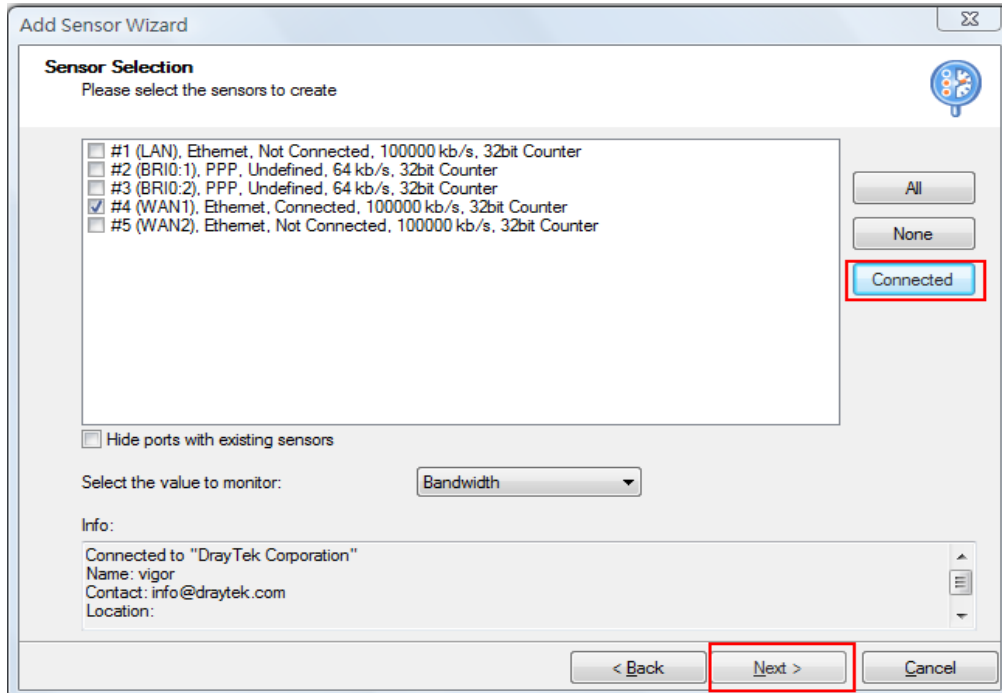
SNMP Community String: public (Standard is 'public')

Help
Please enter a symbolic name for the device that you want to monitor (e.g. "My Router" or "Mail Server").

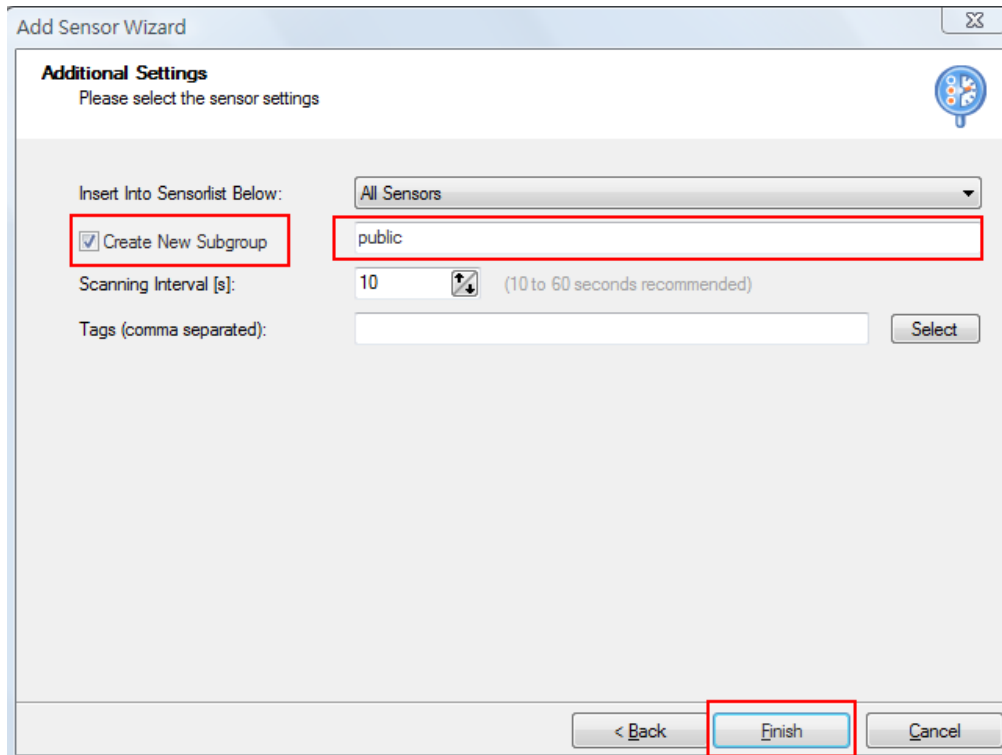
< Back **Next >** Cancel

- Type Public for **Device Name/Alias**,
- Type 61.216.232.71 for **IP Address /DNS Name** (location of network device that you want to monitor, e.g., WAN IP address for Vigor2910, 61. 216. 232 .71)
- Select SNMP Version V1
- Set 161 for **SNMP Port**
- Type Public for **SNMP Community String**
- Click **Next**.

10. In **Sensor selection**, click **Connected**. PRTG will automatically detect which interface that Vigor2910 used. Then, click **Next**.



11. In **Additional Settings**, enable **Create New Subgroup** and click **Finish**.



12. Now, you can use PRTG to monitor network traffic of Vigor2910.

